

How to link Java applet or FW-Voyager to third party web site

This document explains how to link Java Applet or FW-Voyager window to third party web site. The major change from FWT_GS016_Rev0 is to describe how to use FW-Voyager module per customer needs.

1. Java Applet Link

When the FlexWATCH uses directory authentication, you can load a Java Applet from FlexWATCH by loading a small size image before applet tag with ID and PASSWORD like below. Please note that you need to enter right ID and Password of FlexWATCH, when you write a script.

Sample Code

```
<HTML>
<body>



<applet mayscript codebase="http://IP_OF_FLEXWATCH/app/applet/" name=FWatch code='FWatch.class' width=356
height=264>
  <PARAM NAME="camnum" VALUE="1">
  <PARAM NAME="camrun" VALUE="FALSE">
  <PARAM NAME="speed" VALUE="0">
  <PARAM NAME="copyright" VALUE="www.flexwatch.com/copyright">
  <PARAM NAME="producer" VALUE="Powered By SEYEON TECH">
  <PARAM NAME="product" VALUE="FlexWATCH - Web Camera Server">
</applet>

</body>
</HTML>
```

2. FW-Voyager and FW-Voyager Module link

FW-Voyager is designed to work with both in MSIE (ActiveX control) and Netscape Navigator (Plug-in). All the functions of this software are also provided as a component type. Thus, depending on your application, you can link only ActiveX or Plug-in controlled JPEG Stream to a third party web site disabling other recording function or JPEG Stream with limited DVR function of FW-Voyager such as Snap Shot or PTZ control. Through this you can provide different level of service for your client depending on their needs.

Notice!

- You can not disable Authentication process when you link FW-Voyager window to third party web page. Thus, if you want to let anyone have access to live video, you need to disable authentication mode in the FlexWATCH system by selecting "All" mode. Otherwise, FW-Voyager window linked to third party web site will ask access ID and Password.
- If any function of FuncREC, FuncDO, FuncBEEP, FuncVIEW and FuncCAMCTRL from the parameters is "true" type, you can not display duplicate image from same IP address by running another web browser in the same desk top.
- If all the parameter of FuncXXX is "false", all the tool bar will be disappeared.
- To see what you modified, you need to upload the file either to FlexWATCH Network camera or video server or third party web server (IIS, Apache).

- Sample code of standard FW-Voyager

```
<HTML>
```

```
<body>
```

```
<OBJECT classid=CLSID:C388B58A-84CC-466C-A2BD-CC2A36AEFF8B
codebase=http://www.flexwatch.com/app_link/download/Vygr_SP.cabwidth=372 height=260 id=Voyager1>
```

```
<param name="ServerURL" value=" IP_OF_FLEXWATCH ">
<param name="ServerID" value="0">
<param name="UserID" value="root">
<param name="UserPWD" value="root">
<param name="Border" value="true">
<param name="SvrToolbar" value="true">
<param name="CamToolbar" value="true">
<param name="SvrStatusbar" value="true">
<param name="CamStatusbar" value="true">
```

```
<param name="FuncREC" value="true">
<param name="FuncDO" value="true">
<param name="FuncBEEP" value="true">
<param name="FuncVIEW" value="true">
<param name="FuncCAMCTRL" value="true">
<param name="FuncPTZ" value="true">
<param name="FuncABOUT" value="true">
```

```
<param name="BgColor" value="WHITE">
<param name="PreCamSet" value="TRUE">
```

```
<param name="CamSrc1" value=" true ">
<param name="HFlip1" value="false">
<param name="VFlip1" value="true">
<param name="TimeDisplay1" value="TopLeft">
```

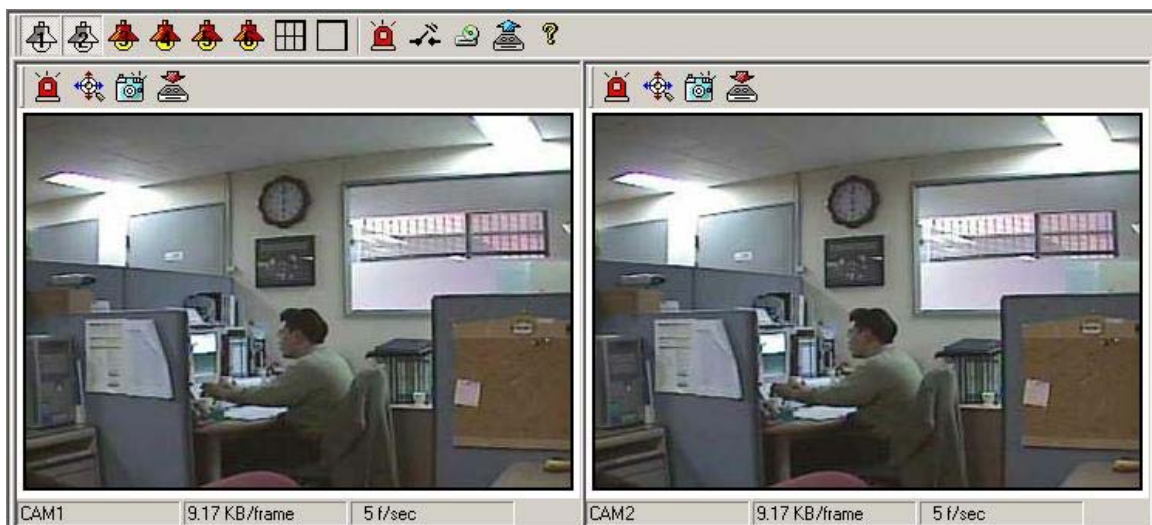
```
<param name="CamSrc2" value=" true ">
<param name="Hflip2" value="false">
<param name="Vflip2" value="true">
<param name="TimeDisplay2" value="TopLeft">
```

```
</OBJECT>
```

```
</body>
```

```
</html>
```

Example of FW-Voyager



● Description of parameters

ServerURL	→ IP address of FlexWATCH system
ServerID	→ This is not supported option at this while, but for future upgrade and interface.
UserID	→ Authorized ID for FlexWATCH system access, if server access is protected by ID. If no authorization is required, any ID in the program will not be valid.
UserPWD	→ Authorized PW for FlexWATCH system access, if server access is protected by PW.
Border	→ Image Border insert or remove(True/False)
SvrToolbar	→ Remove tool bar for server such as Alarm,Disk,DI/DO and FW-Voyager player, But functions are configured by Mouse button on the image. (True/False)
CamToolbar	→ Remove or Insert tool bar for Camera such as Recording, snapshot, forced saving and PTZ Control bar. (True/False)
SvrStatusbar	→ Remove or Insert server status bar appeared on the bottom of standard FW-Voyager. (True/False)
CamStatusbar	→ Remove or Insert Camera status bar appeared on the bottom of standard FW-Voyager. (True/False)
FuncREC	→ Remove or Insert RECORDING dialog button. (True/False)
FuncDO	→ Remove or Insert DO control dialog button. (True/False)
FuncBEEP	→ Remove or Insert BEEP alarm dialog button. (True/False)
FuncVIEW	→ Remove or Insert View control dialog button. (True/False)
FuncCAMCTRL	→ Remove or Insert Camera On/off button. (True/False)
FuncPTZ	→ Remove or Insert PTZ control button. (True/False)
FuncABOUT	→ Remove or Insert software information button. (True/False)
BgColor	→ Background color selection(white or black)
PreCamSet	→ Whether or not to display image once connected(True/False)
CamSrc1	→ Whether to activate CAM#1 or not (True/False)
HFlip1	→ Horizontal flip set-up for CAM#1(True/False)
VFlip1	→ Vertical flip set-up for CAM#1(True/False)
TimeDisplay1	→ Display time set-up for CAM#1(No, TopLeft, TopRight, BottomLeft, BottomRight)
CamSrc2	→ Whether to activate CAM#2 or not (True/False)
Hflip2	→ Horizontal flip set-up for CAM#1(True/False)
Vflip2	→ Vertical flip set-up for CAM#1(True/False)
TimeDisplay2	→ Display time set-up for CAM#1(No, TopLeft, TopRight, BottomLeft, BottomRight)

Example 1

- This code explains how to program HTML code not to show any control button on the FW-Voyager image. But all function are enabled by right button click of mouse

```
<html>
```

```
<BODY leftmargin=0 topmargin=0 marginwidth=0 marginheight=0>
```

```
<br><br>
```

**Example 1
 No show of all control Button but All FW Voyager functions alt enabled by mouse button click**

```
<br><br>
```

Image to Size Calculation

Width = image_width + (Number of Screen by Width +1)x10(With 10pixel of Boarder margin)

Height = image_height + (Number of Screen by Depth +1)x10(With 10pixel of Boarder margin)

Exampled Image Size

Width : 372 = 352 + (1+1)x10

Height : 260 = 240 + (1+1)x10


```
<OBJECT classid=CLSID:C388B58A-84CC-466C-A2BD-CC2A36AEFF8B
codebase=http://www.flexwatch.com/app_link/download/Vygr_SP.cab
width=372 height=260 id=Voyager1>
```

```
<param name="ServerURL" value="192.168.0.190">
```

```
<param name="ServerID" value="0">
```

```
<param name="UserID" value="root">
```

```
<param name="UserPWD" value="root">
```

```
<param name="SvrToolbar" value="false">
```

```
<param name="CamToolbar" value="false">
```

```
<param name="SvrStatusbar" value="false">
```

```
<param name="CamStatusbar" value="false">
```

```
<param name="FuncREC" value="true">
```

```
<param name="FuncDO" value="true">
```

```
<param name="FuncBEEP" value="true">
```

```
<param name="FuncVIEW" value="true">
```

```
<param name="FuncCAMCTRL" value="true">
```

```
<param name="FuncPTZ" value="true">
```

```
<param name="FuncABOUT" value="true">
```

```
<param name="BgColor" value="WHITE">
```

```
<param name="PreCamSet" value="true">
```

```
<param name="CamSrc1" value="true">
```

```
<param name="HFlip1" value="false">
```

```
<param name="VFlip1" value="false">
```

```
<param name="TimeDisplay1" value="no">
```

```
</OBJECT>
```

```
</body>
```

```
</html>
```



Example 1

No show of all control Button but All FW Voyager functions alt enabled by mouse button click

Image to Size Calculation

Width = image_width + (Number of Screen by Width +1)x10(With 10pixel of Boarder margin)

Height = image_height + (Number of Screen by Depth +1)x10(With 10pixel of Boarder margin)

Examplerd Image Size

Width : 372 = 352 + (1+1)x10

Height : 260 = 240 + (1+1)x10



Example 2

- This code explains how to program HTML code to show different image from different IP address of camera when it is linked to third party web site.

```
<html>
```

```
<BODY leftmargin=0 topmargin=0 marginwidth=0 marginheight=0>
```

```
<br><br>
```

```
Example 2 <br>
```

**CAM #1 : No show of REC & PTZ button but All FW Voyager functions are enabled by mouse button click
**

CAM #2 : Show only Recording tool bar. But other functions are enabled by right button of mouse.

```
<br><br>
```

```
Image to Size Calculation<br>
```

```
Width = image_width + (Number of Screen by Width+1)x10(With 10pixed of Boarder margin)<br>
```

```
Height = image_height + (Number of Screen by Depth+1)x10(With 10pixed of Boarder margin) + alpha <br>
```

```
alpha : <br>
```

```
server toolbar : 28<br>
```

```
camera toolbar : 28<br>
```

```
server statusbar : 20<br>
```

```
camera statusbar : 18<br>
```

```
<br><br>
```

```
Examplerd Image Size<br>
```

```
CAM #1<br>
```

```
Width : 372 = 352 + (1+1) x 10<br>
```

```
Height : 278 = 240 + (1+1) x 10 + 18(camera statusbar) <br><br><br>
```

```
CAM #2<br>
```

```
Width : 372 = 352 + (1+1) x 10<br>
```

```
Height : 278 = 240 + (1+1) x 10 + 28(camera statusbar) <br><br>
```

```
<OBJECT classid=CLSID:C388B58A-84CC-466C-A2BD-CC2A36AEFF8B  
codebase=http://www.flexwatch.com/app_link/download/Vygr_SP.cab  
width=372 height=278 id=Voyager1>
```

```
<param name="ServerURL" value="192.168.0.190">
```

```
<param name="ServerID" value="0">
```

```
<param name="UserID" value="root">
```

```
<param name="UserPWD" value="root">
```

```
<param name="SvrToolbar" alue="false">
```

```
<param name="CamToolbar" value="false">
```

```
<param name="SvrStatusbar" value="false">
```

```
<param name="CamStatusbar" value="true">
```

```
<param name="FuncREC" value="true">
```

```
<param name="FuncDO" value="true">
```

```
<param name="FuncBEEP" value="true">
```

```
<param name="FuncVIEW" value="true">
```

```
<param name="FuncCAMCTRL" value="false">
```

```
<param name="FuncPTZ" value="false">
```

```
<param name="FuncABOUT" value="true">
```

```
<param name="BgColor" value="WHITE">

<param name="PreCamSet" value="true">
  <param name="CamSrc1"      value="true">
  <param name="HFlip1"      value="false">
  <param name="VFlip1"      value="false">
  <param name="TimeDisplay1" value="TopLeft">

</OBJECT>
<OBJECT classid=CLSID:C388B58A-84CC-466C-A2BD-CC2A36AEFF8B
  codebase=http://www.flexwatch.com/app_link/download/Vygr_SP.cab
  width=372 height=288 id=Voyager1>

  <param name="ServerURL" value="192.168.0.189">
  <param name="ServerID" value="0">

  <param name="UserID" value="root">
  <param name="UserPWD" value="root">

  <param name="SvrToolbar" value="false">
  <param name="CamToolbar" value="true">

  <param name="SvrStatusbar" value="false">
  <param name="CamStatusbar" value="false">

  <param name="FuncREC" value="true">
  <param name="FuncDO" value="true">
  <param name="FuncBEEP" value="true">
  <param name="FuncVIEW" value="true">
  <param name="FuncCAMCTRL" value="false">
  <param name="FuncPTZ" value="true">
  <param name="FuncABOUT" value="true">

  <param name="BgColor" value="WHITE">

  <param name="PreCamSet" value="true">
    <param name="CamSrc2" value="true">
    <param name="HFlip2" value="false">
    <param name="VFlip2" value="false">
    <param name="TimeDisplay2" value="BottomRight">

</OBJECT>

</body>
</html>
```



Example 2

CAM #1 : No show of REC & PTZ button but All FW Voyager functions are enabled by mouse button click

CAM #2 : Show only Recording tool bar. But other functions are enabled by right button of mouse.

Image to Size Calculation

Width = image_width + (Number of Screen by Width+1)x10(With 10pixel of Boarder margin)

Height = image_height + (Number of Screen by Depth+1)x10(With 10pixel of Boarder margin) + alpha

alpha :

server toolbar : 28

camera toolbar : 28

server statusbar : 20

camera statusbar : 18

Examplerd Image Size

CAM #1

Width : 372 = 352 + (1+1) x 10

Height : 278 = 240 + (1+1) x 10 + 18(camera statusbar)

CAM #2

Width : 372 = 352 + (1+1) x 10

Height : 278 = 240 + (1+1) x 10 + 28(camera statusbar)



Example 3

- This is an another code example how to program HTML code to show different image from different IP address of camera when it is linked to third party web site.

```
<html>
```

```
<BODY leftmargin=0 topmargin=0 marginwidth=0 marginheight=0>
```

```
<br><br>
```

```
Example 3 <br>
```

```
    CAM #1 : Standard FW-Voyager imager <br>
```

```
    CAM #2 : No show and Complete disable of all other functions <br><br>
```

```
Image to Size Calculation<br>
```

```
Width = image_width + (Number of Screen by Width+1)x10(With 10pixel of Boarder margin)<br>
```

```
Height = image_height + (Number of Screen by Depth+1)x10(With 10pixel of Boarder margin) + alpha <br>
```

```
alpha : <br>
```

```
server toolbar : 28<br>
```

```
camera toolbar : 28<br>
```

```
server statusbar : 20<br>
```

```
camera statusbar : 18<br>
```

```
<br><br>
```

```
Exampled Image Size<br>
```

```
CAM #1<br>
```

```
Width : 372 = 352 + (1+1) x 10 <br>
```

```
Height : 354 = 240 + (1+1) x 10 + 94 <br><br><br>
```

```
CAM #2<br>
```

```
Width : 372 = 352 + (1+1) x 10 <br>
```

```
Height : 260 = 240 + (1+1) x 10 <br><br>
```

```
<OBJECT classid=CLSID:C388B58A-84CC-466C-A2BD-CC2A36AEFF8B  
    codebase=http://www.flexwatch.com/app_link/download/Vygr_SP.cab  
    width=372 height=354 id=Voyager1>
```

```
    <param name="ServerURL" value="192.168.0.190">
```

```
    <param name="ServerID" value="0">
```

```
    <param name="UserID" value="root">
```

```
    <param name="UserPWD" value="root">
```

```
    <param name="Border" value="true">
```

```
    <param name="SvrToolbar" value="true">
```

```
    <param name="CamToolbar" value="true">
```

```
    <param name="SvrStatusbar" value="true">
```

```
    <param name="CamStatusbar" value="true">
```

```
    <param name="FuncREC" value="true">
```

```
    <param name="FuncDO" value="true">
```

```
    <param name="FuncBEEP" value="true">
```

```
    <param name="FuncVIEW" value="true">
```

```
    <param name="FuncCAMCTRL" value="true">
```

```
    <param name="FuncPTZ" value="true">
```

```
    <param name="FuncABOUT" value="true">
```

```
    <param name="BgColor" value="WHITE">
```

```
<param name="PreCamSet" value="true">
  <param name="CamSrc1" value="true">
  <param name="HFlip1" value="false">
  <param name="VFlip1" value="false">
  <param name="TimeDisplay1" value="TopLeft">
```

</OBJECT>

```
<OBJECT classid=CLSID:C388B58A-84CC-466C-A2BD-CC2A36AEFF8B
  codebase=http://www.flexwatch.com/app_link/download/Vygr_SP.cab
  width=372 height=260 id=Voyager1>
```

```
<param name="ServerURL" value="192.168.0.189">
<param name="ServerID" value="0">
```

```
<param name="UserID" value="root">
<param name="UserPWD" value="root">
```

```
<param name="Border" value="true">
<param name="SvrToolbar" value="false">
<param name="CamToolbar" value="false">
```

```
<param name="SvrStatusbar" value="false">
<param name="CamStatusbar" value="false">
```

```
<param name="FuncREC" value="false">
<param name="FuncDO" value="false">
<param name="FuncBEEP" value="false">
<param name="FuncVIEW" value="false">
<param name="FuncCAMCTRL" value="false">
<param name="FuncPTZ" value="false">
<param name="FuncABOUT" value="false">
```

```
<param name="BgColor" value="WHITE">
```

```
<param name="PreCamSet" value="true">
  <param name="CamSrc2" value="true">
  <param name="HFlip2" value="false">
  <param name="VFlip2" value="false">
  <param name="TimeDisplay2" value="no">
```

</OBJECT>

</body>

</html>



Example 3

CAM #1 : Standard FW-Voyager imager

CAM #2 : No show and Complete disable of all other functions

Image to Size Calculation

Width = image_width + (Number of Screen by Width+1)x10(With 10pixel of Boarder margin)

Height = image_height + (Number of Screen by Depth+1)x10(With 10pixel of Boarder margin) + alpha

alpha :

server toolbar : 28

camera toolbar : 28

server statusbar : 20

camera statusbar : 18

Examplerd Image Size

CAM #1

Width : 372 = 352 + (1+1) x 10

Height : 354 = 240 + (1+1) x 10 + 94

CAM #2

Width : 372 = 352 + (1+1) x 10

Height : 260 = 240 + (1+1) x 10

